

Destination Loue Lison's cycling tours

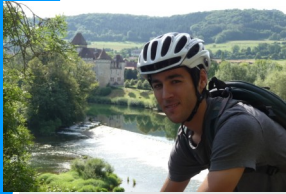
Loop N°5

Viewpoints and Source de la Loue



In this itinerary, you will pass from the valley to plateau to go back in the Loue valley with a long descent carved on the mountain and spectacular cliffs.

Alexandre suggests you the most beautiful roads.



Itinerary description

Starting from Lods, one of the most beautiful villages of France, this 40-km-long itinerary starts with a 6-km rise toward Longeville (D32). You will climb almost 300 metres on a steep road to arrive in this village on the plateau. Turn left on the Longeville street (D27) toward Évillers. You will climb during 2 km and go down during 3km to Évillers. In the centre of the village, at the intersection, turn right on the D41 road toward Ouhans. Just before this village, make a 10-km return trip to the Renédale and Moine viewpoints on the

main street (D376) on the left. After having admired the view on the valley and Nouailles' gorges, come back on the D41 road and go to Ouhans where you can see the Notre Dame des Anges chapel on the top of the hill from the Church street. Then, go down and turn left to go to the spectacular source de la Loue, a resurgence of the Doubs. After your visit at the source, go to the small village of La Main. To go there, turn back and at the intersection turn left on the D41 road. In La Main, turn left on Besançon road. Now, you just have to go down in the valley alongside cliffs through Mouthier-Haute-Pierre and finally in Lods.

Points of interest

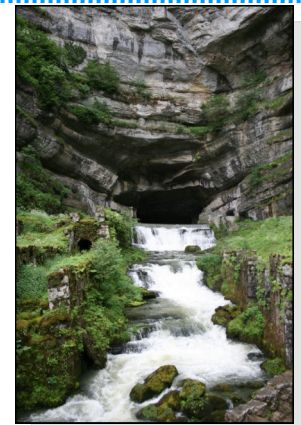
- Lods (one of the most beautiful village of France)
- the Moine and Renédale viewpoint
- Source de La Loue
- Notre-dame des Anges' chapel in Ouhans

Recap

- Start : Lods
- Level: Intermediate
- Distance : 40 Km
- Drop: 1872 m
- Traffic: low
- Ground: Tar

Advices

- Take another inner tube and a pump
- Lock for visits



Source de la Loue

The source de la Loue, a resurgence of the Doubs is located in Ouhans. The origin of the Loue was discovered in 1901 when the Pernod's distilleries in Pontarlier burnt (struck by lightning) and had to empty their alcohol tanks in the Doubs. A few days later, people observed that fishes were swimming in absinth alcohol.



Viewpoints and panoramas

Viewpoints of the Moine and Renédale and alongside the Loue valley, presents viewpoint and exceptional panoramas on the valley and its little town of character of the Franche-Comté. (Mouthier-Haute-Pierre, Lods, Vuillafans and Ornans).

